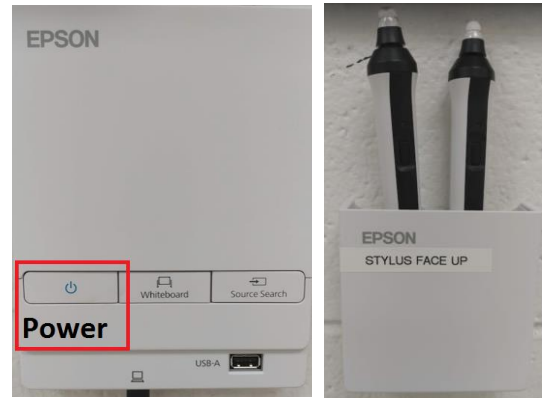


Room Features

Windows 10 PC	Epson Interactive Projector	Wall Speakers
Epson Whiteboard	Epson DC 21 Document Camera	HP 23in Touch Display

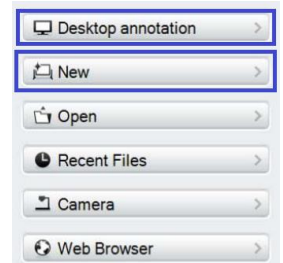
Epson Interactive Projector Instructions

- **Turn on Epson Interactive Projector**
 - Press the Power Button
 - Windows 10 PC should automatically appear on the Epson Whiteboard
- **Epson Stylus Pens**
 - Use Epson Stylus Pens for Touch
 - Return Epson Stylus Pens Face Up in the Pen Holder



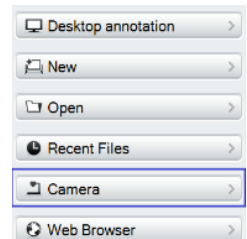
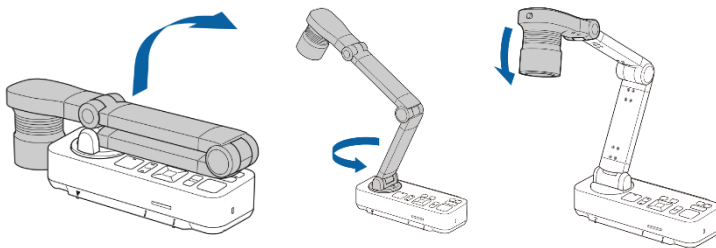
Easy Interactive Tools

- Easy Interactive Tools is an application that allows you to draw on projected images.
 - On the Computer Desktop Select the Easy Interactive Tools Icon and select **Desktop annotation** or **New for instant Whiteboard**



Epson DC 21 Document Camera Instructions

- Raise the camera arm with one hand while holding the base of the camera with your other hand.
 - Rotate the camera arm as shown & Position the camera head above the projection area.
- Turn on Document Camera
 - On the Computer Desktop Select the Easy Interactive Tools Icon and Select Document Camera.
 - Press Power Button Twice to Power Off.



Support

- Epson Interactive Tools: <https://files.support.epson.com/docid/cpd4/cpd40861.pdf>
- Epson DC 21 Camera: <https://files.support.epson.com/pdf/elcdc21/elcdc21ug.pdf>



Epson Tools



Epson Camera

Technical Difficulties / Training

Contact the IT Helpdesk at x2709 or helpdesk@tncc.edu